

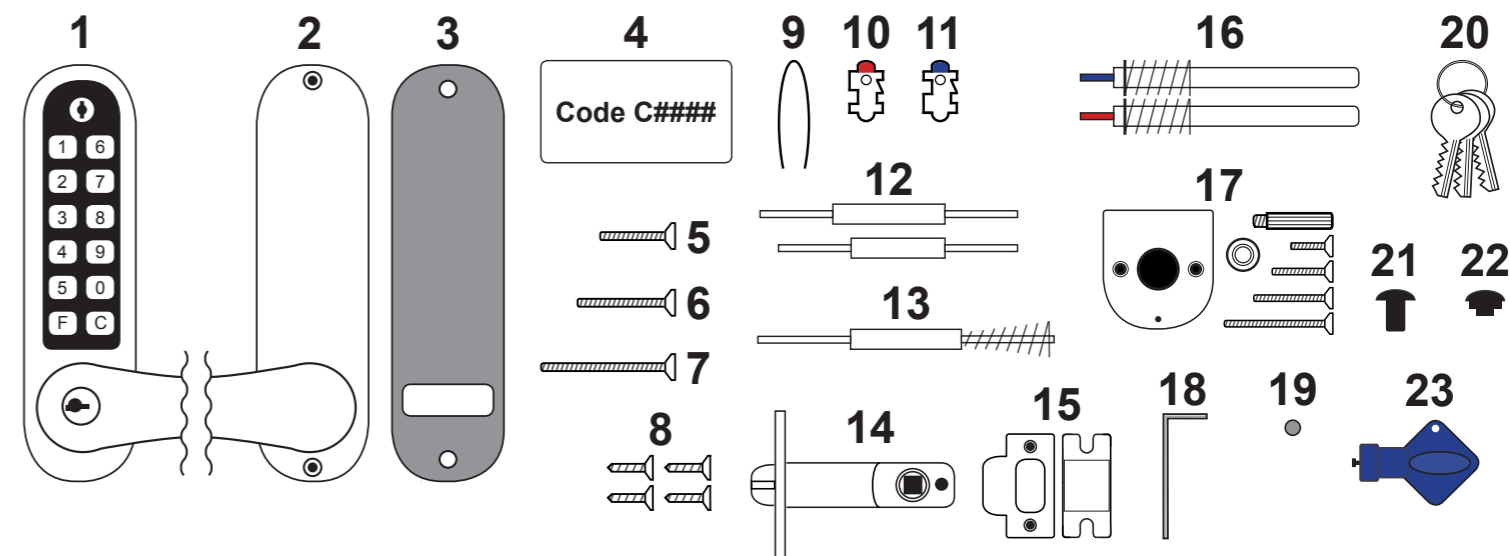
Installation Problems

| Problem | Cause | Solution |
|---|---|---|
| The latch cannot be withdrawn when entering the correct code and turning the lever handle. | The unit has been fitted to a left hand hung door. | All units are set to suit a right hand hung door. The unit needs to be removed and reversed. See 'spindle direction' (Page No.5). |
| Both keypad and inside lever handles retract the latch when lifted upwards. | The spindle has been set for the wrong hand of door. | Remove the unit from the door and reposition the spindle. See 'spindle direction' (Page No.5). |
| The keypad lever handle will not retract the latch after the code has been changed. | The correct code has been forgotten or the code has been changed incorrectly. | If the code has been changed or cannot be remembered refer to identifying lost code (Page No.9), To change the code refer to 'code change' (Page No.8) |
| The latch bolt does not move smoothly in and out. | The lock may be too tight on the door, the spindle is too long or the wood screws (Part No.8) which hold the latch in position are too tight. | Check that the hole for the spindle in the back of the keypad and inside handle are in alignment with the hole in the latch. Check that the latch is positioned horizontally and the forend of the latch is parallel to the door edge. Also check the spindle length, it may be too long and binding against the inside handle or keypad spindle holes. |
| The keypad lever handle turns after entering a correct code but does not retract the latch. | The spindle has been cut too short or has been positioned incorrectly. | If the spindle is too short it will not engage with the keypad knob or inside handle. If the spindle has been placed incorrectly please refer to 'spindle direction' (Page No.5). |

After Installation Problems

| Problem | Cause | Solution |
|--|---|---|
| The keypad lever handle turns freely and withdraws the latch without having to enter any code. | The keypad has been put into free passage mode. | The keypad will need to be taken out of free passage, refer to 'operating the free passage function' (Page No.11). |
| The inside handle lever does not return to the upright position after turning. | The inside handle return spring has broken. | Please contact your supplier for a replacement handle return spring or inside handle. |
| The latch bolt does not engage with the strike and the door remains in the open position. | The latch is not entering the hole in the strike plate. | The door or frame may have warped since the lock was installed. Check that the latch bolt is in line with the hole in the strike plate. Re-align position of the strike if necessary. Make sure the anti-thrust pin on the latch does not enter the hole in the strike plate (Page No.7). |

Parts List



Model
(Contents supplied with unit)

| Part No. | Description | AS4301 | AS4302 | AS4303 | AS4304 | AS4305 | AS4306 | AS4307 | AS4308 | AS4309 |
|----------|---|--------|--------|--------|--------|--------|--------|--------|--------|--------|
| 1 | Keypad | • | • | • | • | • | • | • | • | • |
| 2 | Inside Handle | • | • | • | • | • | • | X | X | • |
| 3 | Gaskets (Pair) <small>*Single Gasket on AS4307 & AS4308 models</small> | • | • | • | • | • | • | * | * | • |
| 4 | Code Card | • | • | • | • | • | • | • | • | • |
| 5 | 40mm Machine Screw (Pair) | • | • | • | • | • | • | • | • | • |
| 6 | 50mm Machine Screws (Pair) | • | • | • | • | • | • | • | • | • |
| 7 | 60mm Machine Screws (Pair) | • | • | • | • | • | • | • | • | • |
| 8 | Wood Screws (x4) | • | • | • | • | • | • | • | • | • |
| 9 | Code Change Tweezers | • | • | X | • | • | X | • | X | X |
| 10 | Red Tipped Coded Tumbler (Pair) | • | • | X | • | • | X | • | X | X |
| 11 | Blue Tipped Non-Coded Tumbler (Pair) | • | • | X | • | • | X | • | X | X |
| 12 | 81mm & 91mm Spindle (Pair) | • | • | • | • | • | • | X | X | X |
| 13 | 115mm Sprung Spindle | X | X | X | X | X | X | X | X | • |
| 14 | Tubular Latch (60mm Backset Standard) | • | • | • | X | X | X | X | X | • |
| 15 | Strike Plate & Box Keep | • | • | • | X | X | X | X | X | • |
| 16 | 125mm Sprung Push Pad Spindles (Pair) | X | X | X | X | X | X | • | • | X |
| 17 | 'U' Plate Fixing Kit w/ Cup Washer, Hexagon Fixing Posts & Machine Screws | X | X | X | X | X | X | • | • | X |
| 18 | Hex Key | • | • | • | • | • | • | • | • | • |
| 19 | Rubber Grommet (Spare) | • | • | • | • | • | • | • | • | • |
| 20 | Key Override Keys (x3) | X | X | X | X | X | X | X | X | • |
| 21 | On Door Code Change Deactivation Plug | X | X | • | X | X | • | X | • | • |
| 22 | Free Passage Deactivation Plug | X | X | • | X | X | • | X | • | • |
| 23 | Code Change Key | X | X | • | X | X | • | X | • | • |

Guarantee: If your lock should develop a fault within 1 year from date of purchase, due to inferior materials or workmanship the goods will be repaired or replaced free of charge.

Please call our help line for spares, repairs and technical advice

Disclaimer: Under no circumstances should the lock be dismantled as this will invalidate the warranty.

Please check that all the parts are working correctly. Enter the factory preset code as on the code card (**Part No.4**), rotate the lever on the keypad once downwards, re-enter the code and rotate the lever upwards, ensuring that the handle rotates freely each time. The lever should return easily under its spring pressure. If you intend to change the code please refer to 'code change' instructions (**Page No.8**) this can be easily be done before or after the unit has been fitted.

Make sure that the inside handle (**Part No.2**) rotates freely and returns under its spring pressure.

Check that the latch bolt of the tubular latch (**Part No.14**) moves freely by pressing the latch bolt at the end, the latch bolt should spring out under its own spring pressure.

Determining the hand of the door

Many of the installation instructions refer to the handing of the door. The hand of the door is determined with the door in its closed position from the exterior or keypad side of the door.

- A) Right hand door – door opens inward (push), hinged on the right side.
- B) Left hand door – door opens inward (push), hinged on the left side.
- C) Right hand outward opening – door opens outward (pull), hinged on the right side.
- D) Left hand outward opening – door opens outward (pull), hinged on the left side.

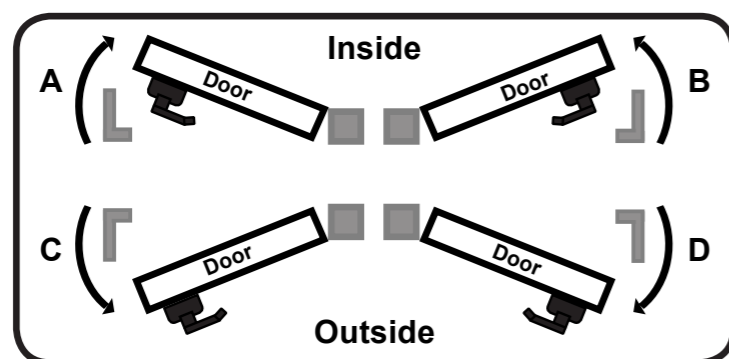


Fig.1

Changing the Handing of the Unit

All units come preset right hand, unless you have specifically ordered left hand.

AS4301, AS4302, AS4303, AS4304, AS4305, AS4306, AS4307 & AS4308 keypads

To change the handing on the non-key override keypads, this is done by removing the grey grommet located on the side of the keypad handle; this will expose the head of the grub screw underneath.

Using the hex key (**Part No.18**) remove the grub screw and this will allow the handle to come away from the handle holder. Place the handle onto the handle holder facing in the correct direction for your hand of door. The grub screw can be replaced and tightened and the grommet can be replaced.

AS4309 keypad

To change the handing on the key override model, this is done by removing the grey grommet located on the top and bottom of the keypad handle; this will expose the head of the grub screws underneath.

Using the hex key (**Part No.18**) loosen the grub screws located on the top and bottom of the keypad lever handle until they are flush with the hole - **rotate the handle to allow clear access to the grub screws**. With the grub screws loosened the lever handle will come away and leave the handle holder and cylinder exposed. Place the handle onto the handle holder facing in the correct direction for your hand of door and the grub screws can be tightened and the grommet can be replaced.

Inside handles (all models excl. AS4307 & AS4308)

Remove the grey grommet located on the side of the inside handle, this will expose the head of the grub screw underneath.

Using the hex key (**Part No.18**) remove the grub screw and this will allow the lever handle to come away from the handle holder. Place the lever handle onto the handle holder facing the correct direction for your hand of door. The grub screw can be replaced and tightened and the grommet can be replaced.

Operating the Keypad with the Code

When operating the keypad using the code, the 'C' button is to be pressed before entering the code. Pressing the 'C' button ensures that the coding chamber is clear of any buttons that may have accidentally been pressed.

1. Press the 'C' button to clear any pressed buttons.
2. Enter the code.
3. Pull the handle down. The door can be pushed/pulled to open.
4. The handle can be released and the unit will reset. The door can be closed and the unit will be locked from the keypad side.

Operating with the Key Override

The following instructions are only applicable for the AS4309 model only with built-in key override.

1. Insert the correct key in the cylinder in the keypad handle.
2. Rotate the key away from the edge of the door. Clockwise (right) for a right-handed door or anti-clockwise (left) for a left hand hung door.
3. Pull/push the door open.
4. With the door open, the key can be removed from the cylinder. The door can be closed and the unit will be locked from the keypad side.

Operating the Inside Handle

The following instructions are applicable for all AS4300 models excluding the AS4307 & AS4308.

When operating the unit from the inside handle, the unit will always allow the handle to turn and open the door. The only time the inside handle may not open the door, is if you have a AS4304, AS4305 or AS4306 and fitted with a third party lock and is deadlocked using a cylinder below the keypad/inside handle. The dead bolt will need to be unlocked by the cylinder in order for the inside handle to unlock the door.

1. Pull the handle down. The door can be pushed/pulled to open.
2. The handle can be released. The door can be closed and the unit will be locked.

Operating the Free Passage Function

Free passage is a function which allows the handle to turn freely without the need to enter the code each time a user passes through the door.

Applicable for AS4303, AS4306, AS4308 & AS4309 models only

Setting the keypad into free passage mode

To operate the free passage function on the keypad, the correct code will need to be entered into the keypad; the keypad lever handle rotated and the 'F' button pressed - the lever handle will now be free turning and withdrawing the latch.

Returning the keypad to the locked mode

To take the keypad out of the free passage mode, the keypad lever handle will need to be rotated and the 'C' button pressed; an audible click will be heard and the keypad handle can be released. The mechanism will reset - the handle will still be free turning, but not withdrawing the latch.

Applicable for AS4301, AS4302, AS4304, AS4305 & AS4307 models only

Setting the keypad into free passage mode

To operate the free passage function on the keypad, the correct code will need to be entered along and the 'F' button pressed - turn the handle and it will now be free turning.

Returning the keypad to the locked mode

To take the keypad out of the free passage mode, the 'F' button will need to be pressed (audible click will be heard) followed by the 'C' button pressed. The keypad will reset and the handle will revert back to the locked mode.

Deactivating the Free Passage Function

To deactivate the free passage function, follow the instructions on **Page 3**.

Removal & Change of Key Override Cylinder

Removal & Change of Key Override Cylinder

The following instructions are only applicable for AS4309 model which has built-in key override.

If the key override cylinder needs to be changed and replaced for another cylinder this is done as follows. To remove the cylinder, the correct keys for the cylinder are required. The cylinder is best removed from the keypad lever handle prior to being fitted onto the door.

1. Remove the grey grommets located at the top and bottom of the keypad lever handle; this will expose the head of the grub screws underneath.
2. Using the hex key (Part No.18) loosen the grub screws located on the top and bottom of the keypad lever handle until they are flush with the hole. With the grub screws loosened the lever handle will come away and leave the handle holder and cylinder exposed.
3. Put one of the correct keys (Part No.20) into the cylinder, rotate 45° clockwise and pull the key. This will allow the keys, cylinder, plug and retainer to come out as one as per Fig.17.
4. If a different cylinder is to be fitted, the cylinder plug and retainer will need to be removed from the back of the original cylinder and fitted onto the new cylinder. **Note that the cylinder plug is a tight fit into the brass sleeve.**

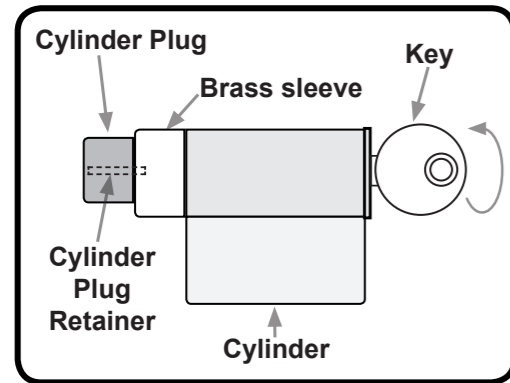


Fig.17

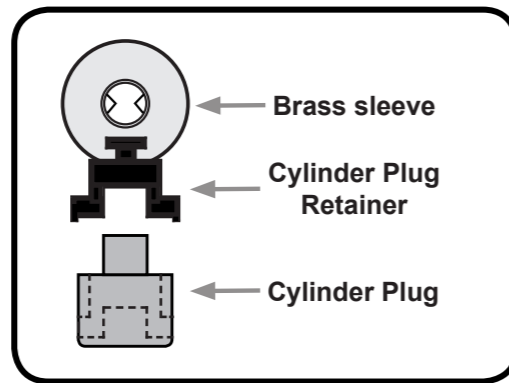


Fig.18

5. When fitting the cylinder plug and retainer to the new cylinder, place the **cylinder plug retainer** in first and rest it on the 2 notches on the **brass sleeve**. When in place, the **cylinder plug** can be pushed into the hole in the brass sleeve as per Fig.18.
6. With the cylinder facing horizontally (Image A - Fig.19), put one of the correct keys into the new cylinder, rotate 45° clockwise and push into the handle holder. When in position the cylinder will drop into place and the key can be rotated back to the fixed position (Image B - Fig.19) and remove the keys and the cylinder should now be held into the handle holder.
7. The lever handle can now be placed back over the handle holder, the grub screws tightened and the grommets replaced. Spare grommet (Part No.19) supplied in accessory pack.

Please note if the lever handle does not return under its own spring pressure after entering the correct code and rotated, the grub screws may be too tight and will need to be loosened.

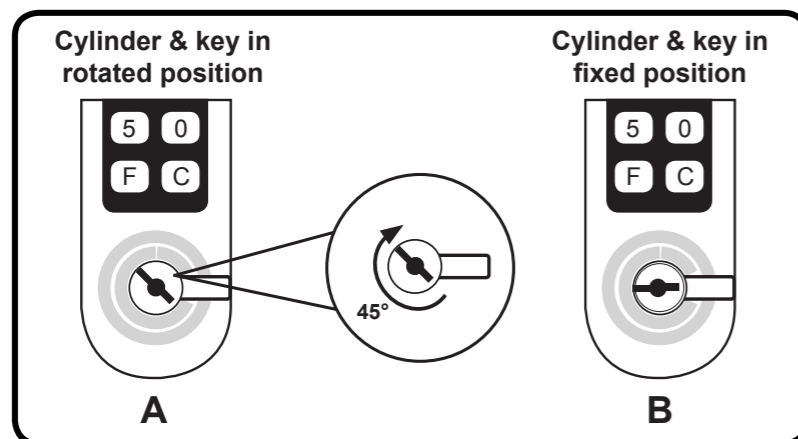


Fig.19

Preparation

Deactivating the Free Passage Function

Applicable for AS4303, AS4306, AS4308 & AS4309 models only.

To deactivate the free passage function, the free passage deactivation plug (Part No.22) from the accessory pack will need to be fitted prior to the unit being fitted to the door.

On the back of the keypad you will see the slot located behind the 'F' button.

Using the free passage deactivation plug (Part No.22), insert into the slot marked 'F' on the back of the keypad. Ensure that the dome part facing upwards as per the Fig.2 below.

Please note that if the free passage deactivation plug is fitted and the unit is fitted to the door, the free passage function will not be able to be used. If at a later date the free passage function is required, the unit will need to be removed from the door and the free passage deactivation plug removed.

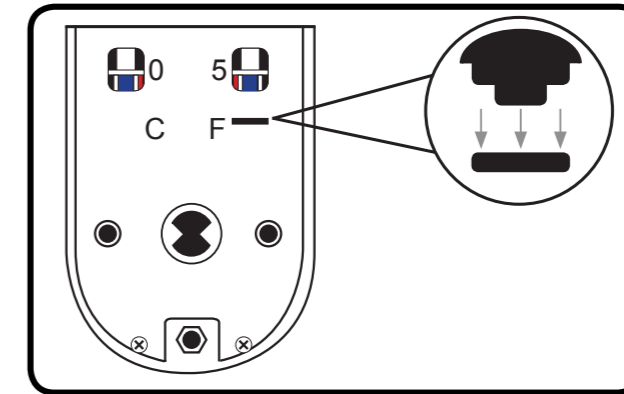


Fig.2

Removing the Free Passage Function

Applicable for AS4302 & AS4305 models only. The AS4301, AS4304 AS4307 have already had the free passage tumbler removed.

To deactivate the free passage function, the free passage tumbler will need to be removed. This will need to be done prior to the unit being fitted to the door.

1. Remove the 4 red screws which are securing the tumbler cover plate on the back of the keypad. Hold the tumbler cover plate when removing the screws, as there are 12 springs located underneath. Lift the tumbler cover plate off and put aside.
2. Press and hold the 'C' button. **Ensure the buttons are facing downwards or the tumblers will fall out.**
3. Using the code change tweezers (Part No.9) lift out the free passage tumbler as per Fig.3 below.
4. With the free passage tumbler removed you can take your finger off the 'C' button.
5. The tumbler cover plate can now be secured onto the back of the keypad with the 4 red screws.

Please note that if the free passage tumbler is removed, the free passage function will not be able to be used. If at a later date the free passage function is required, the unit will need to be removed from the door and the free passage tumbler reinserted. The 'C' button must be held in when removing or reinserting the free passage tumbler.

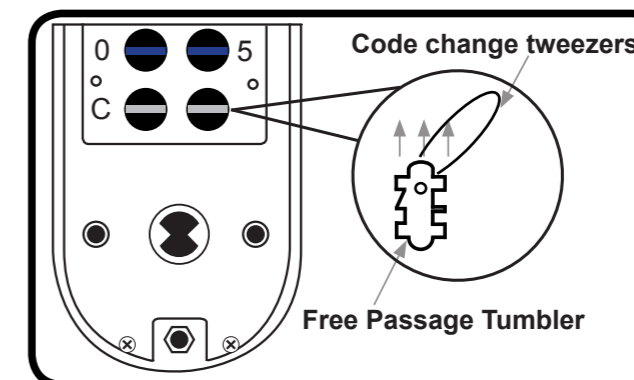


Fig.3

Deactivating on the Door Code Change

Applicable for AS4303, AS4306, AS4308 & AS4309 models only.

In the event the code will never need to be changed on the door, the on door code change deactivation plug (**Part No.21**) from the accessory pack can be fitted prior to the unit being fitted to the door.

On the back of the keypad you will see a hole with a indicating arrow in the top centre.

Using the on door code change deactivation plug (**Part No.21**), insert into the hole with the indicating arrow. Ensuring that the dome part facing upwards as per **Fig.4** below.

Please note that if the on door code change deactivation plug is fitted and the unit is fitted to the door, the code will not be able to be changed on the door. If at a later date the on the door code change function is required, the unit will need to be removed from the door and the on door code change deactivation plug removed.

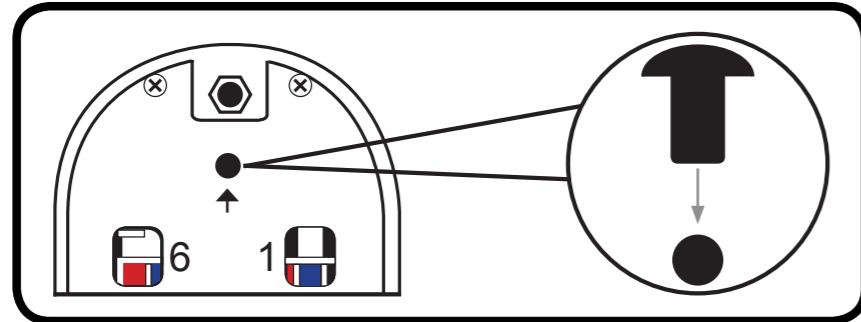


Fig.4

Apply the Drilling Template

Applicable for AS4301, AS4302, AS4303, AS4304, AS4305, AS4306 & AS4309 only.

Tape the template to the door and ensure that the dotted line on the template is aligned to the edge of the door as per **Fig.5**.

Mark all 3 holes (2x10mm & 1x30mm) as shown on the drilling template. **Note the 30mm hole is off-centre to accommodate the spindle follower cam within the latch.**

Mark on the door 'centre line of latch' ensuring that the centre line for the latch is in the centre on the edge of the door.

Applicable for the AS4307 & AS4308 only.

Tape the template to the door and ensure that the dotted line on the template is aligned to the edge of the door as per **Fig.5**.

Mark all 4 holes (3x10mm & 1x30mm) as shown on the drilling template.

The template is only a guide, see push pad manufacturers instructions for any additional drilling information.

Drilling the Door & Fixing the Latch

Applicable for AS4301, AS4302, AS4303 & AS4309 supplied with the tubular latch only

With all the drilling points marked out on the door, the holes can be drilled.

All of the 2x10mm holes and 1x30mm will need to be drilled through the door.

Where the 'centre line of latch' is marked on the template, mark in the centre edge of door and drill a 30mm wide and 85mm deep hole in the edge of the door to accommodate the barrel of the latch.

Insert the barrel of the latch (**Part No.14**) into the hole in the edge of the door and draw around the rectangular forend of the latch.

With the forend marked, remove the latch from the hole in the door. Now remove 3mm of material from the door so that the face plate of the latch sits flush with the door edge. With the latch positioned in the door it can now be secured using two of the woods screws (**Part No.8**) via the two holes in the forend of the latch.

Applicable for AS4303, AS4306, AS4308 & AS4309 models only

In the event of a code that has been lost or forgotten the unit will need to be removed from the door.

1. With the unit removed from the door turn the keypad over and you will see that there is 10 portholes which correlate with the buttons on the button side of the keypad, through these holes you will see blue and red lines.

2. Press the 'C' button to reset any buttons which may have been pressed.

3. To identify the code the keypad has been set to, you are looking for the red lines which are closest to the centre of the portholes.

4. As per the example **Fig.15** below, you will see that the red lines on digits 2, 4, 6 and 8 are closest to the centre of the porthole and is therefore the code. All the other holes will show a blue line - these are not in the code. Once all the coded buttons have been pressed all 10 holes will have a blue line in the centre of the portholes.

5. There is no sequence to the code so as long as all the buttons in the code are pressed the handle will rotate.

6. Once you have identified the correct code of the unit, make a note of the code before refitting the unit to the door.

When refitted to the door the code can be changed. See **Page 8** for code change..

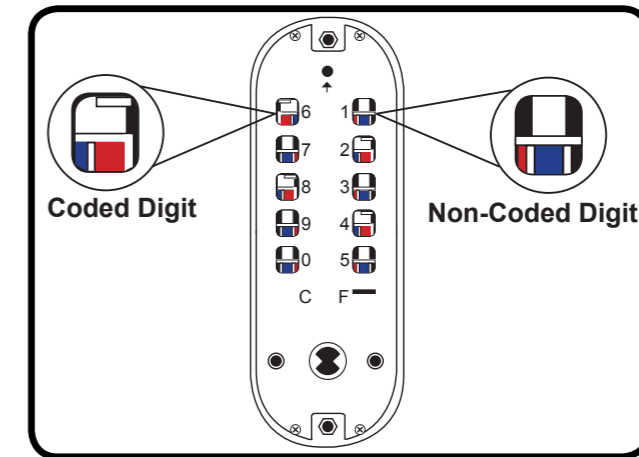


Fig.15

Applicable for AS4301, AS4302, AS4304, AS4305 & AS4307 models only

In the event of a code that has been lost or forgotten the unit will need to be removed from the door.

1. With the unit removed from the door turn the keypad over and you will see that there is 12 portholes which correlate with the buttons on the button side of the keypad, through these holes you will see blue and red tumblers.

2. Press the 'C' button to reset any buttons which may have been pressed.

3. To identify the code the keypad has been set to, you are looking for the red tipped tumblers.

4. As per example **Fig.16** below, you will see that the red tumblers on digits 2, 4, 6 & 8. All the other holes will show a blue lines in the centre of the portholes.

5. There is no sequence to the code so as long as all the buttons in the code are pressed the handle will rotate.

6. Once you have identified the correct code of the unit, make a note of the code before refitting the unit to the door or see **Page 8** to change code.

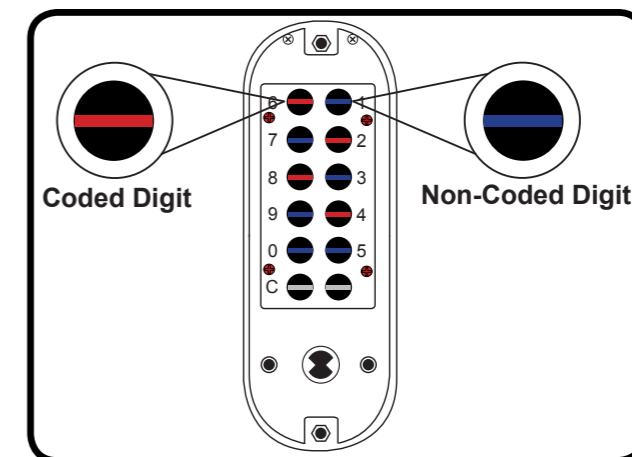


Fig.16

Code Change

Installation

Applicable for AS4303, AS4306, AS4308 & AS4309 models only.

The code should be changed with the door in the open position. To change the code you will need to know what the keypad is currently set to and have the code change key (Part No.23).

The code can be changed with the unit fitted on/off the door. The unit is non sequential, therefore if the code is set to 1234, the keypad will open if entered 4321, 3214 etc..There are over 1000 different code combinations available.

1. Enter existing code
2. Using the code change key (Part No.23) insert over the  button in the top centre of the keypad. Rotate the code change key 90° right (clockwise) then press and hold the key (until step 5).

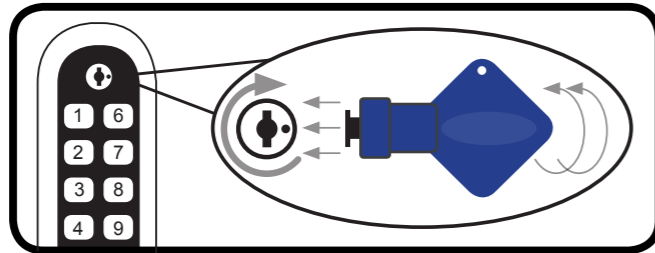




Fig.13

3. Press 'C' clear button to clear the existing code.
 4. Press the digits that are to be in the new code. Press all the digits in the code once again to ensure that all the digits in the code are set.
- Please note, If a mistake is made whilst entering a new code (with the  button rotated and pressed) the 'C' clear button can be pressed, which will cancel any buttons that have been pressed and you can start again.**
5. With the new code entered, the code change key can be removed by releasing the pressure and rotating 90° left (anti-clockwise) and remove the key from the  button.
 6. Press 'C' button or turn the keypad handle to set the new code.
 7. The new code is now set and ready for use.
 8. Check that the code is working 5 times and that it is withdrawing the latch bolt before closing the door.

If a new code has been set and it does not work, the 'C' button has not been pressed when clearing the old code and before inputting the new code; therefore the code will be a combination of the new and old code i.e. if the old code was 1234 and the new code is 6789 the code actually set if 1234 6789. Input both the old and new code and follow the code change from step 1.

If the code has been changed and the keypad lever is free turning and withdrawing the latch, the new code has not been set. Follow the code change from step 2.

Applicable for the AS4301, AS4302, AS4304, AS4305 & AS4307 models only.

1. Take the unit off the door by unscrewing the machine screws on the inside handle (AS4307 model fitting different)
2. Press the 'C' button to reset the coding chamber and place the keypad on a flat surface with the buttons facing down.
3. Remove the 4 red screws and carefully lift off the tumbler cover plate. Check that all 12 springs are held in place on the plate.
4. Note that the red tipped (coded) tumblers are the existing code. The blue (non-coded) tumblers fill the other positions. The 'C' and 'F' tumbler (if fitted) is not coloured.
5. Hold the keypad in your hand and press and hold the 'C' button and using the tweezers (Part No.9) reposition the red tumblers to correspond with your new code. The square notches of ALL tumblers MUST face outwards, see Fig.14 below.

Please note the 'C' button must be fully held in when removing or replacing the tumblers and is essential to avoid damaging the internal mechanism. The 'C' tumbler cannot be removed and should not be attempted to be removed.

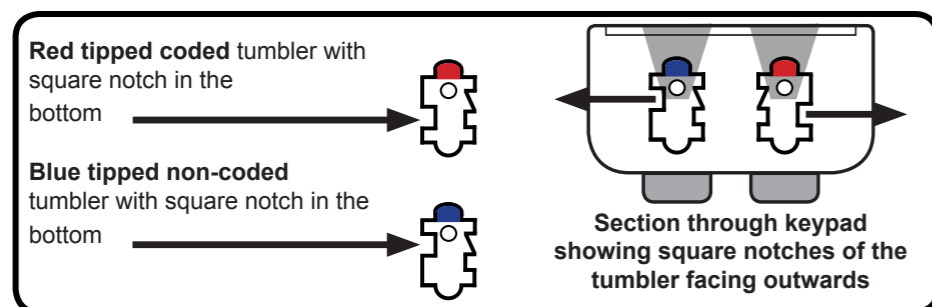


Fig.14

Fitting the Keypad

Applicable for all models.

Place one of the rubber gaskets (Part No.3) around the back of the keypad, ensuring that the gasket is the correct way up and that the spindle follower is still visible. As per Fig.6.

Applicable for the AS4301, AS4302, AS4303, AS4304, AS4305, AS4306 & AS4309 models only.

The fixing posts at the top and bottom on the reverse of the keypad will sit in the very top and bottom 8mm holes drilled in the face of the door. When in place ensure that the spindle is located into the spindle follower on back of the keypad.

Applicable for the AS4308 & AS4309 models only.

The fixing posts at the top and 2 either side of the spindle follower will sit in the 3x10mm holes drilled in the face of the door. When in place ensure that the spindle is located into the spindle follower on back of the keypad.

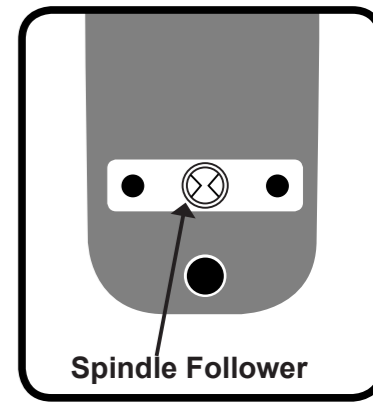


Fig.6

Spindle Direction

Applicable for AS4301, AS4302, AS4303, AS4304, AS4305, AS4306 models only.

Select one of the two spindles supplied 81mm/91mm (Part No.12) - use the longest spindle possible. Trimming the spindle down may be required, but this would depend entirely on the thickness of the door. It is recommended that 10-15mm of the bladed part of the spindle goes into the back of the keypad and inside handle. The spindle will need to be facing the correct direction. The spindle needs to face towards the top opening edge of the door. See Fig.7.

Applicable for AS4309 model only.

The unit is supplied with a sprung spindle (Part No.13). The spindle comes preset to suit a right hand hung door; whereby the spring is located around the bladed part of the spindle which will go into the inside handle. The spring is fitted to the spindle to ensure the spindle is located and held into the back of the keypad to allow the key override to function correctly. Once you have determined what side of the spindle will go into the inside handle - if the spindle needs to be trimmed it is recommended that the bladed side which will be going into the back of the inside handle is trimmed. The spindle needs to face towards the top opening edge of the door see Fig.7.

Please note the spindle should not be cut down on the bladed side that is going into the back of the keypad. At least 35mm of the spindle is required to go into the back of the keypad to allow the key override to work correctly.

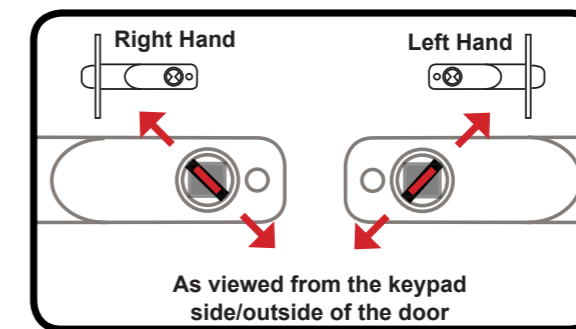


Fig.7

Applicable for AS4307 & AS4308 models only.

Select one of the two spindles supplied 125mm sprung push pad spindles (Part No.16), blue tipped right hand & red tipped left hand. Trimming the spindle down may be required, but this would depend entirely on the thickness of the door. It is recommended that 10-15mm of the bladed part of the spindle goes into the back of the keypad and 10mm into the back of the push pad. The spindle will need to be facing the correct direction. The spindle needs to face towards the top opening edge of the door see Fig.8.

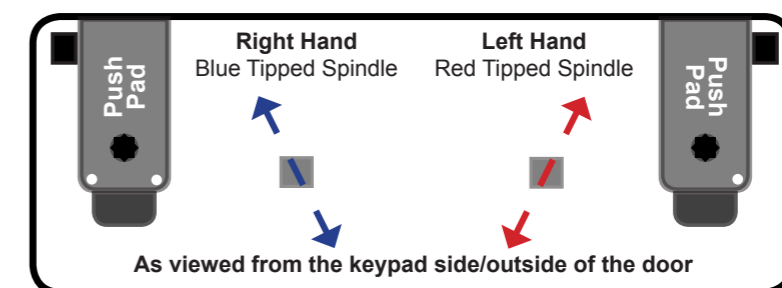


Fig.8

Installation

Fitting the Inside Handle & Securing to the Door

Applicable for AS4301, AS4302, AS4303, AS4304, AS4305, AS4306 & AS4309 models only.

Place the remaining rubber gasket (Part No.3) around the back of the inside handle and as with the keypad side the spindle follower on the back of the inside handle will need to be visible.

With the keypad in place on the door and the inside handle having the rubber gasket in place the inside handle can be offered up to the door and secured in place using one pair of the machine screws (Part No.5, 6 or 7). The length of machine screw used would depend entirely on the thickness of the door.

Once the unit has been secured onto the door the unit can be tested on the set code. Check that both the keypad and inside handle retract the latch fully.

Applicable for AS4307 & AS4308 models only.

With the keypad in place on the door, use the cup washer and a machine screw from the 'U' plate fixing kit (Part No.17) to secure the keypad's top fixing point. The 'U' plate is to secure the bottom of the keypad - using 2 of the machine screws into the 2 counter sunk holes on the 'U' plate and screwing into the small posts either side of the spindle follower. The length of machine screw used would depend entirely on the thickness of the door.

Please note if the latch does not retract, the spindle has been put in the incorrect way. Please refer to 'spindle direction' Fig.7 on page 5.

If the spindle has been cut too short for the thickness of door, you will find that you will only be able to retract the latch from one side of the door (typically the inside handle) and therefore you will need to remove and replaced with a longer or new spindle.

If you find the operation of the unit is very stiff when you are testing, either the unit has been over tightened on the door and it would need to be loosened, or not enough material has been removed when drilling out the hole for the barrel of the latch and the unit will need to be taken off of the door and more material removed.

Fitting Illustration

Applicable for AS4301, AS4302, AS4303 & AS4309 models only

Please note the spindle in Fig.9 below may differ dependant on model.

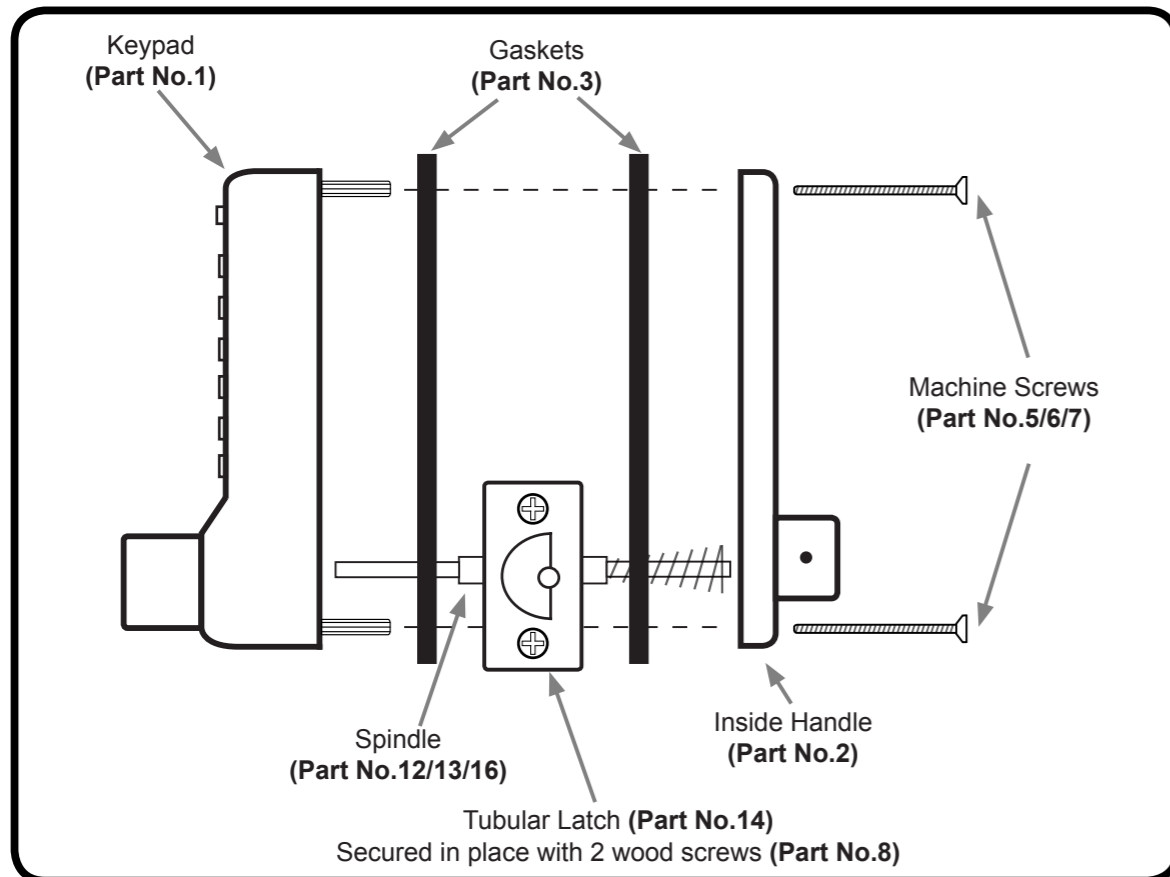


Fig.9

Installation

Fitting the Strike Plate & Box Keep

Applicable for AS4301, AS4302, AS4303 & AS4309 supplied with the tubular latch only

Push the door to the closed position and mark the area on the frame of the door where the strike plate would need to be fitted as per Fig.10.

Open the door and now mark the inner and outer edges of the strike plate. Using a sharp chisel remove 1mm of material from the frame of the door until the strike plate can sit flush.

With the material for the strike plate removed from the frame of the door, the material for the box keep will need to be removed. Place the box keep in the cut-out made for the strike plate and draw around the box keep. You will need to remove 36mm high, 23mm wide and 13mm deep of material to accommodate the box keep, alternatively a 20mm diameter by 15mm deep hole can be drilled in the frame to allow the latch bolt to fully protrude when the door is in its closed position.

To secure the strike plate and box keep in place, use two of the wood screws (Part No.8). Now that the strike and the box keep have been secured in place the door can be closed. Ensure that the keypad and inside handle withdraw the latch when the door is in its closed position.

If the operation of the lock is excessively stiff when turning the keypad or inside handle, the strike plate and box keep position will need to be adjusted.

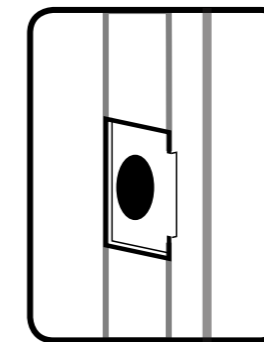


Fig.10

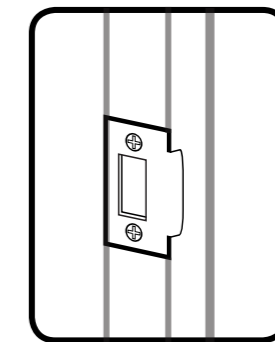


Fig.11

Please note the anti-thrust beside the latch bolt as shown in Fig.12, this deadlocks the latch bolt and protects it against manipulation. **It must not** enter the hole made for the latch bolt when the door is closed.

If the anti-thrust pin does go into hole for the latch bolt, adjust the position of the strike plate until the anti-thrust pin sits on the face of the strike plate.

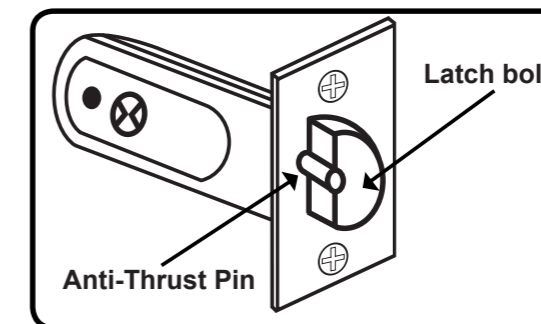


Fig.12

Final Testing

1. Enter the code into the keypad and rotate the lever handle downwards. Ensure that the lever handle turns smoothly, retracts the latch bolt and returns under its own spring pressure.
2. Turn the inside lever handle downwards. Ensure that the handle turns smoothly, retracts the latch bolt and returns under its own spring pressure.
3. If the unit has key override (AS4309 model), insert the correct key into the keyway and rotate clockwise right handed door or anti-clockwise for a left handed door. Ensure that the key turns smoothly, retracts the latch bolt and returns under its own spring pressure.
4. Close the door and check that the latch bolt sits into the strike plate correctly. With the door closed try to push/pull the door open, if the door does not open the latch bolt and strike plate are correctly fitted.

If any of the above are not correct, please refer the problem solving guide on Page 12.