

1. MAIN COMPONENTS

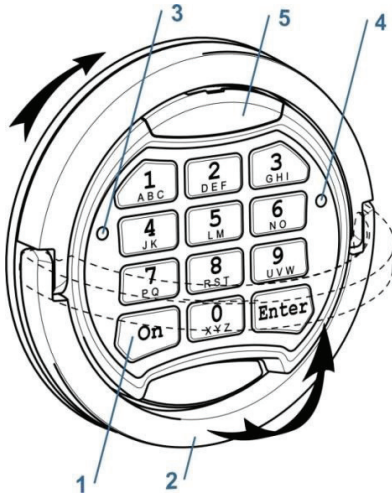


Fig. 1.1

1. Keypad
2. Folding handle
3. Green LED [G]
4. Red LED [R]
5. Plastic cover for emergency power

2. DEFINITIONS

2.1 Master Code

A set of numbers (6 to 8 digits) which opens the lock and is used for the set up of all lock features.



Before using the safe, please change the factory Master code (see par.4.1). It is strongly recommended to keep the master code safe from unauthorized people. Do not use easily guessed sequences (birthdays, house and phone numbers, etc.)



Factory Master Code:
1-2-3-4-5-6

2.2 User Codes

A set of numbers (6 to 8 digits) which opens the lock and has limited functions to change the settings.

A maximum of 9 user codes can be set up.



The lock does not have a Factory User Code set up. Please see par.4.2 to set the User codes.

2.3 Signals

[G]1	Short single acoustic signal with single green LED flash (3) – confirmation of the button pressing on the keypad.
[G]2	Short double acoustic signal with double green LED flash (3) – confirmation of successfully finished operation.
[R]--	Long single acoustic signal with single red LED flash (4) – error message on the user's actions.
[R]5	Short acoustic signal sounds 5 times with 5 red LED flashes (4) – low battery message. Please see par.5.1 how to change the battery.

3. MAIN FUNCTIONS

3.1 Opening the Lock

3.1.1 Opening with the Factory Master code

[ON] [1] [2] [3] [4] [5] [6] [Enter]

3.1.2 Opening with the Master or User Code

[ON] [Master or User Code] [Enter]

If the code is correct, the green LED will flash twice and the door can be opened within 5 seconds by turning the handle (2) clockwise.



If you enter a wrong code three times in a row, the keypad will be locked for 5 minutes. This will be indicated with intermittent red LED flashes.

3.2 Closing the Lock

Close the door and turn the handle (2) anti-clockwise until it stops.

4. SERVICE FUNCTIONS



It is strongly recommended to change the settings of the lock with the door in the open position. After changing the code, the lock should be tested several times with the door in the open position.



The service functions will be unavailable in the case of low power supply which is indicated by the signals, please refer to par.2.3, [R]5.

4.1 Changing the Master Code

[ON] [Enter] [1] [Enter] [Current Master Code] [Enter] [new Master Code] [Enter]
[repeat new Master Code] [Enter]

Checking the new Master code:

[ON] [new Master Code] [Enter]

4.2 Setting and changing the User Code—with the Master Code



Before setting or changing a User Code, the default Master Code must be changed (see par.4.1). Up to 9 user codes can be set up.

[ON][Enter][2][Enter]

[1-9 (user code position)] [Enter] [Master Code] [Enter] [new User Code] [Enter]

[repeat new User Code] [Enter]

Checking the new User Code:

[ON] [New User Code] [Enter]

4.3 Changing the User Code without the Master Code

[ON] [Enter] [3] [Enter]

[1-9 (user code position)] [Enter] [Current User Code] [Enter]

[new User Code] [Enter]

[repeat new User Code] [Enter]

Checking the new User Code:

[ON] [new User Code] [Enter]

4.4 Deleting the User Code

[ON] [Enter] [0] [Enter] [1-9 (user code position)] [Enter] [Master Code] [Enter]

4.5 Switching off/switching on the sound

[ON] [Enter] [5] [Enter] [Master Code] [Enter]

5. TIME DELAY FUNCTION

5.1 Switching on the Time Delay function

[ON] [Enter] [6] [Enter] [Master Code] [Enter] [01-99 – opening delay] [1-9 – opening window] [Enter]



E.g.: 092 = 9 minute delay time, and a 2 minute opening window

5.2 Opening the Lock with the Time Delay

[ON] [Master or User code] [Enter] (Wait for opening delay time to finish. Acoustic signal will indicate the end.) [Master or User Code] [Enter]




Pressing [Enter] during the Time Delay will interrupt this feature, and the process will have to start again.

5.3 Switching off the Time Delay function

[ON] [Enter] [6] [Enter] [Master Code] [Enter][000] [Enter]

6. DUAL CODE FUNCTION

6.1 Switching on the Dual Code function

-  Before switching on the function, make sure you have set up a User Code see par.4.2.
The Dual Code function has priority over other lock functions.

[ON] [Enter] [7] [Enter] [Master Code] [Enter]


When the [ON] button is pressed with the Dual Code function switched on, the lock will respond with [⚡G]2 (see par.2.3).

6.2 Opening with the Dual Code function

1st code:- [ON] [0-9 (user code position)] [Enter] [User / Master Code] [Enter]

2nd code:- [0-9 (user code position)] [Enter] [User or Master Code] [Enter]

-  The User Code Position of Master Code is [0].

-  After entering the first Code there is a 1 minute window to enter the 2nd code. This is indicated by [⚡G]1 (see par.2.3) every 5 seconds.

6.3 Switching off the Dual Code function

[ON] [Enter] [8] [Enter] [Master Code] [Enter]

7. SERVICING

7.1 Changing the Battery

- The battery is located on the inside of the door. Depending on the safe model, the battery could be either inside the lock battery compartment (Fig.7.1a) or in a special pull-out battery box (Fig.7.1b).
- Remove the cover of the battery compartment (see Fig. 7.1a. or pull out the box (see Fig. 7.1b).

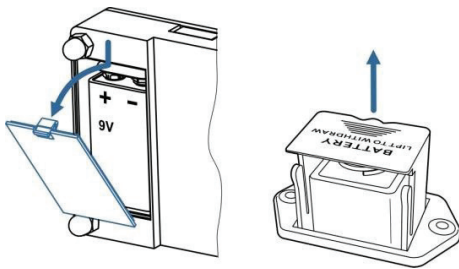


Fig. 7.1 a.

- Install a new battery (9V, type 6LF22).
- Replace the cover or place the box back into position.

7.2 Opening the lock when the Battery is Discharged

- Take a new battery (9V, type 6LF22).
- Release the plastic cover for emergency power (5), see Fig. 7.2.

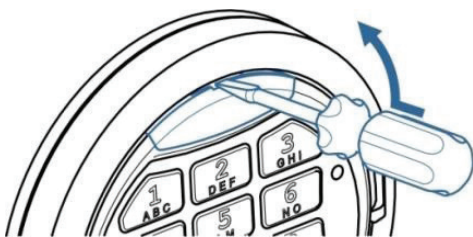



Fig. 7.2

- Press the new battery to emergency power pins and fix it in this position (see Fig.7.3).

-  Do not allow the battery's contacts to touch the metal parts of the lock.

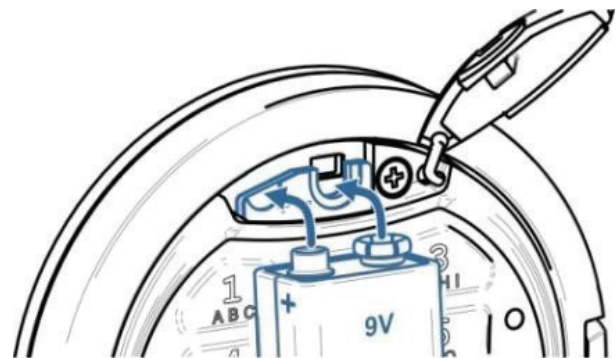


Fig. 7.3

- Enter the valid code on the keypad (1) and open the door.
- Disconnect the emergency battery, and replace the main battery on the inside of the door. see par. 7.1.

GUARANTEE REGISTRATION

Please submit your guarantee registration by visiting our website www.phoenixsafe.com and clicking on guarantee registration.

For further assistance or information please contact us on 0151 944 6444.

APEX HOUSE, 1 ORRELL MOUNT, LIVERPOOL, L20 6NS,
UNITED KINGDOM | +44 (0)151 944 6444